



## Retail Office Space for Lease

13352 Aberdeen St. NE Ham Lake, MN

### AREA

- Join Fitaholic & Blaine Family Chiropractic
- Suite B - 2740 SF – inline space (40'w x 68' deep)
- Signage & Visibility to Hwy 65 (Central Ave)
- 37,400 vehicles per day (MNDot 2020)
- SE Corner of Hwy 65 & Bunker Lake Blvd

### Details

- Landlord will provide new front door access for this inline space.
- Buildouts based on lease term



### PROPERTY DETAILS

Lease Rate: 15.00/SF  
CAM/Taxes: \$5.50/SF (2021)

## FOR MORE INFORMATION, CONTACT

**Marty Fisher/Mike Fisher**

763-862-2005

[mfisher@premiercommercialproperties.com](mailto:mfisher@premiercommercialproperties.com)

[mikefisher@premiercommercialproperties.com](mailto:mikefisher@premiercommercialproperties.com)





**PREMIER**  
COMMERCIAL  
PROPERTIES

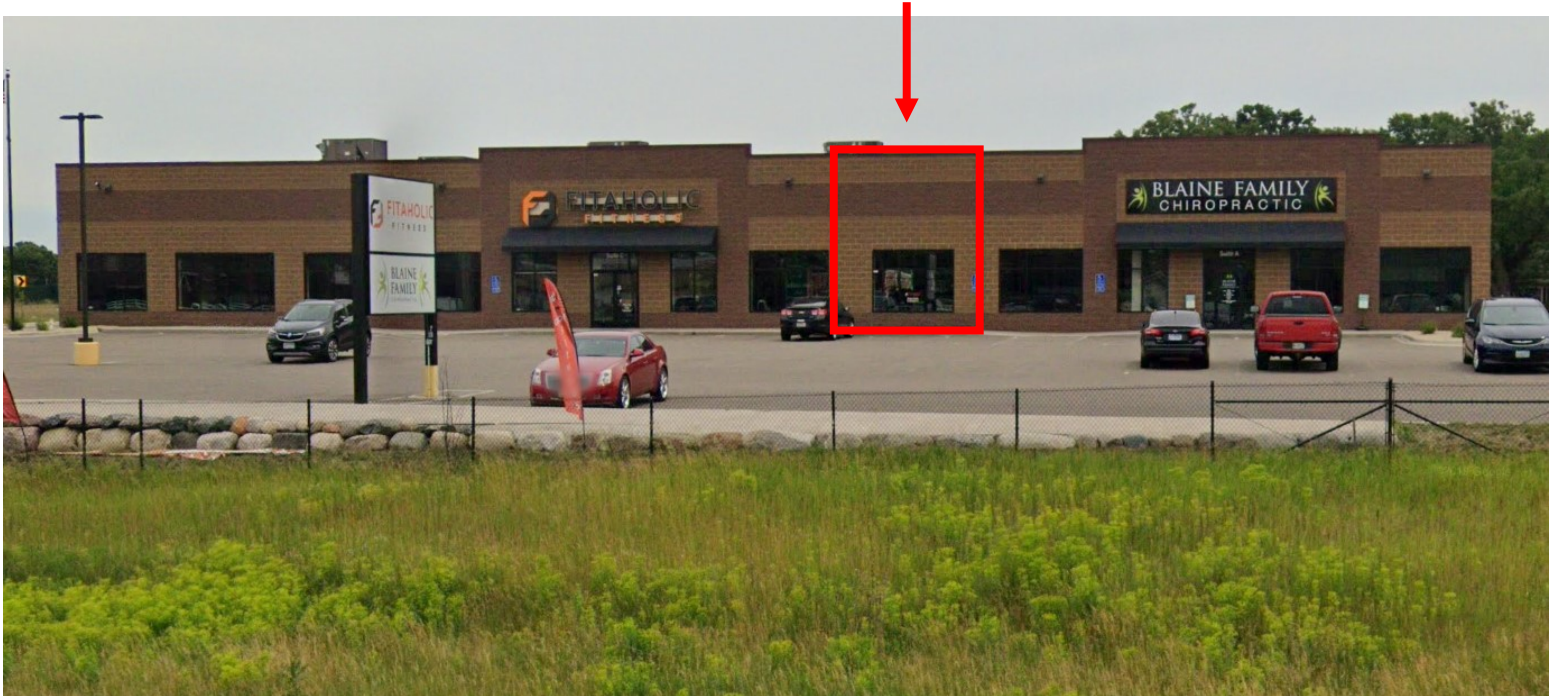
# FOR LEASE

**CONTACT:** Marty Fisher

**MOBILE:** 612-708-2873

**EMAIL:** mfisher@premiercommercialproperties.com

## Door and Signage Location







**CONTACT:** Marty Fisher

**MOBILE:** 612-708-2873

**EMAIL:** mfisher@premiercommercialproperties.com

## Close to Bunker Lake Blvd

