



PREMIER
COMMERCIAL
PROPERTIES

FOR LEASE



Retail Office Space for Lease

12203 Aberdeen St. NE Blaine, MN

Details

- Professional office space built in 2005
- Great Blaine locations with visibility & monument signage to Aberdeen Street NE
- Area Amenities include shopping, restaurants, TPC Golf Course, Blaine Medical Center, National Sports Center, Anoka County Airport, Target, Lowes, and many more.
- Plenty of parking – 40 marked surface stalls
- Suite 140 – 2,400 SF endcap with reception, private offices on glass, conference room, kitchen, private bathroom, and storage.



PROPERTY DETAILS

Lease Rate: \$3,800 / Month
Plus Utilities

FOR MORE INFORMATION, CONTACT

Marty Fisher/Mike Fisher

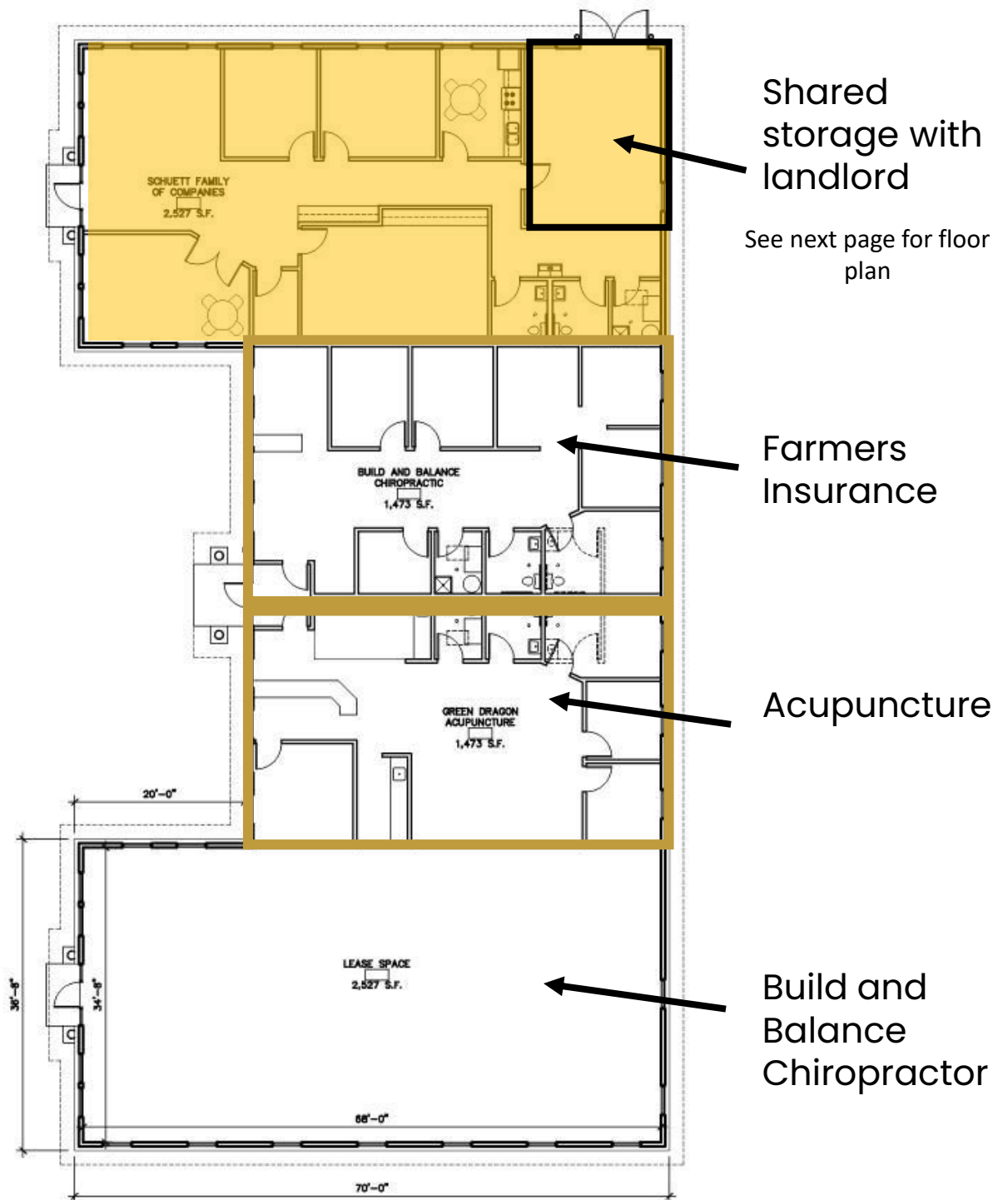
763-862-2005

mfisher@premiercommercialproperties.com

mikefisher@premiercommercialproperties.com



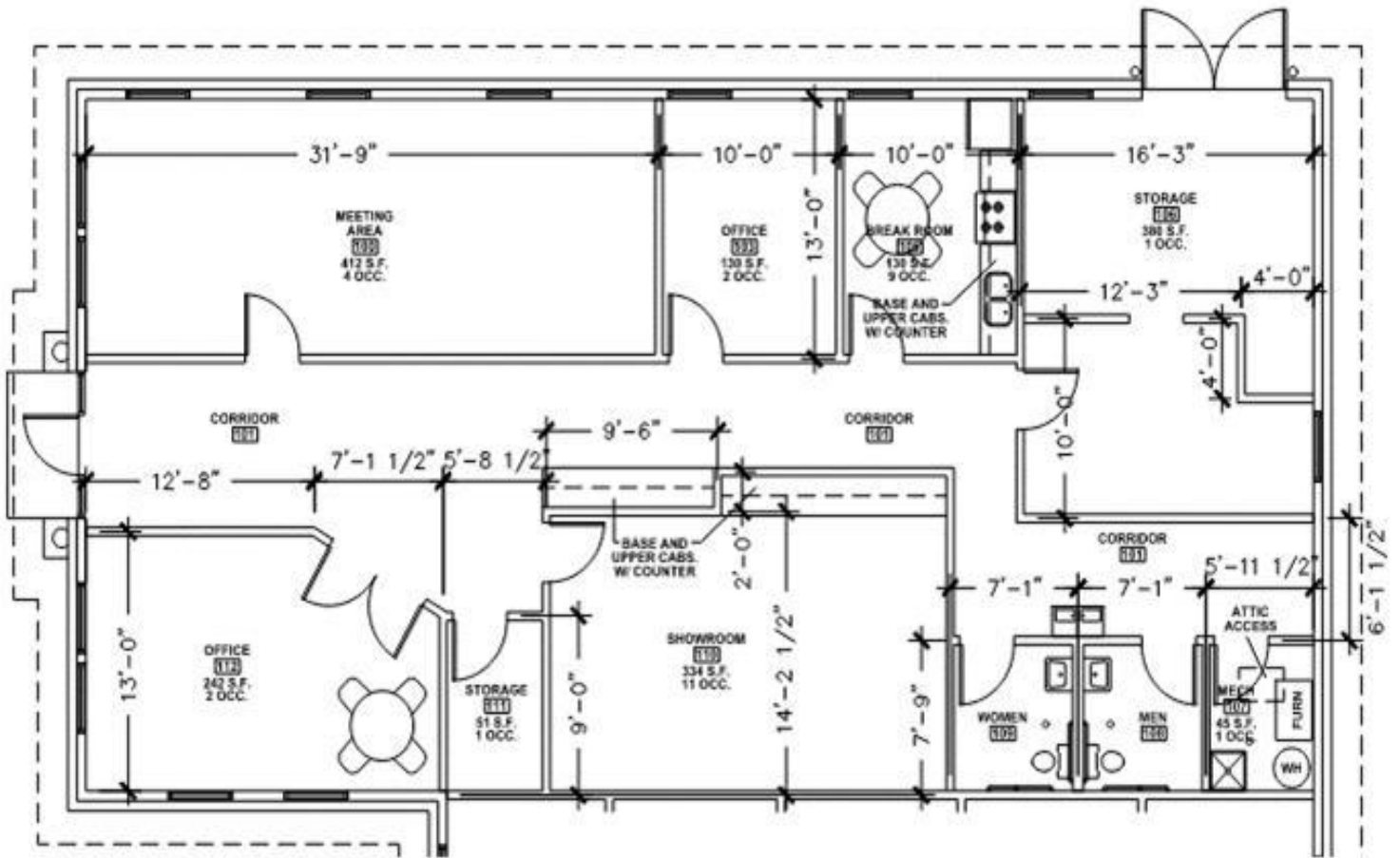
Suite 140 – 2400 SF





Suite 140 Floor Plan

(Floor plan is not exact)





PREMIER
COMMERCIAL
PROPERTIES

FOR LEASE

CONTACT: Marty Fisher

MOBILE: 612-708-2873

EMAIL: mfisher@premiercommercialproperties.com





PREMIER
COMMERCIAL
PROPERTIES

FOR LEASE

CONTACT: Marty Fisher

MOBILE: 612-708-2873

EMAIL: mfisher@premiercommercialproperties.com





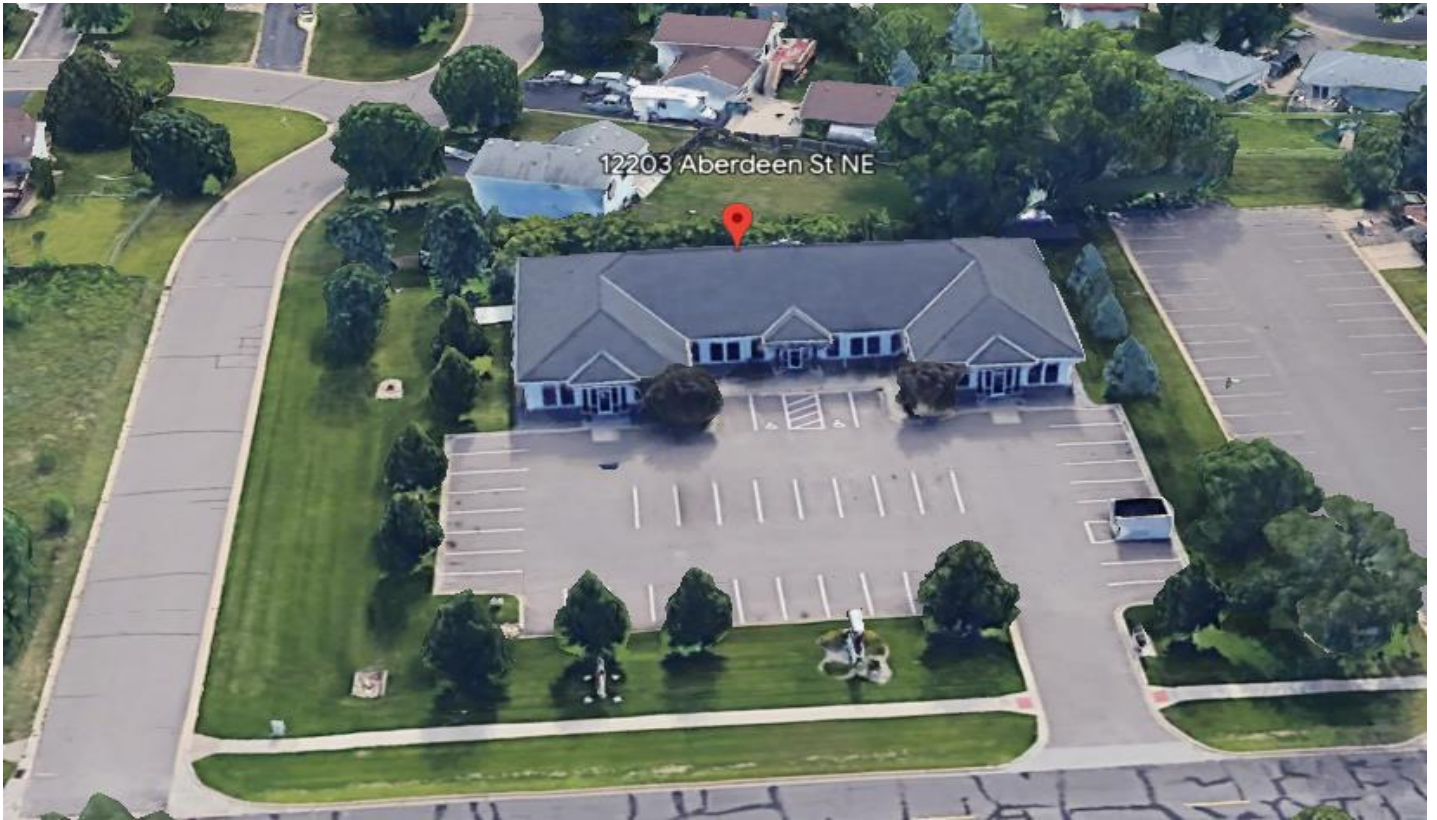
PREMIER
COMMERCIAL
PROPERTIES

FOR LEASE

CONTACT: Marty Fisher

MOBILE: 612-708-2873

EMAIL: mfisher@premiercommercialproperties.com





PREMIER
COMMERCIAL
PROPERTIES

FOR LEASE

CONTACT: Marty Fisher

MOBILE: 612-708-2873

EMAIL: mfisher@premiercommercialproperties.com

