



PREMIER
COMMERCIAL
PROPERTIES

FOR LEASE

1040 Sixth St S Hopkins, MN 55343



For Lease: Office

1040 Sixth St S Hopkins, MN 55343

PROPERTY FEATURES

- ◆ EASY ACCESS OFF HWY 169 & EXCELSIOR BLVD
- ◆ CLOSE PROXIMITY TO DOWNTOWN HOPKINS
- ◆ PRIVATE PARKING
- ◆ MAIN LEVEL SUITE
- ◆ OPEN LAYOUT WITH CONFERENCE ROOM, RECEPTION, KITCHENETTE AND PRIVATE BATROOMS

PROPERTY DETAILS:
2,012 SF APPROX
LEASE RATE:
\$20.00 PSF GROSS

FOR MORE INFORMATION, CONTACT

Rich Lee / Bradee Thompson
763.862.2005

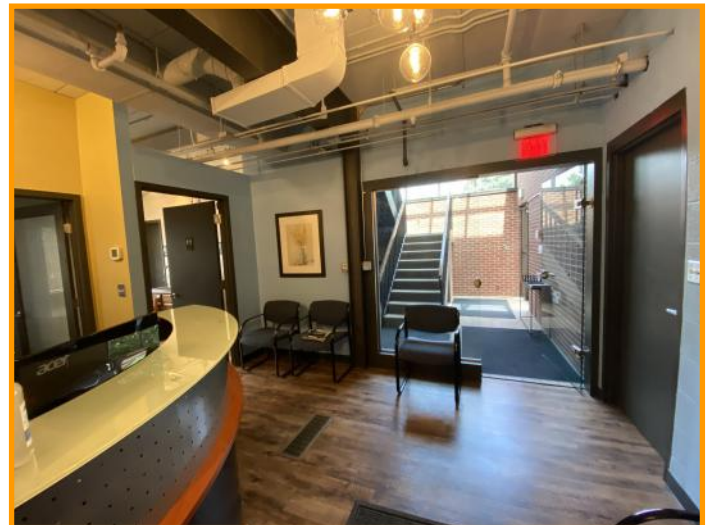
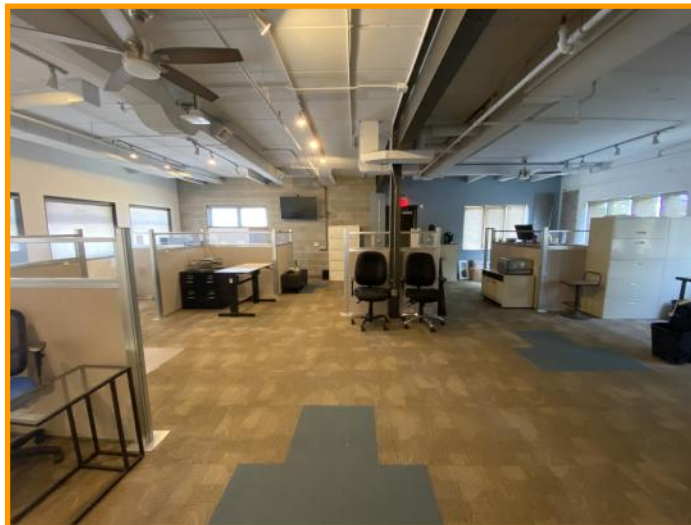
RichLee@premiercommercialproperties.com
Bthompson@premiercommercialproperties.com



PREMIER
COMMERCIAL
PROPERTIES

FOR LEASE

1040 Sixth St S Hopkins, MN 55343

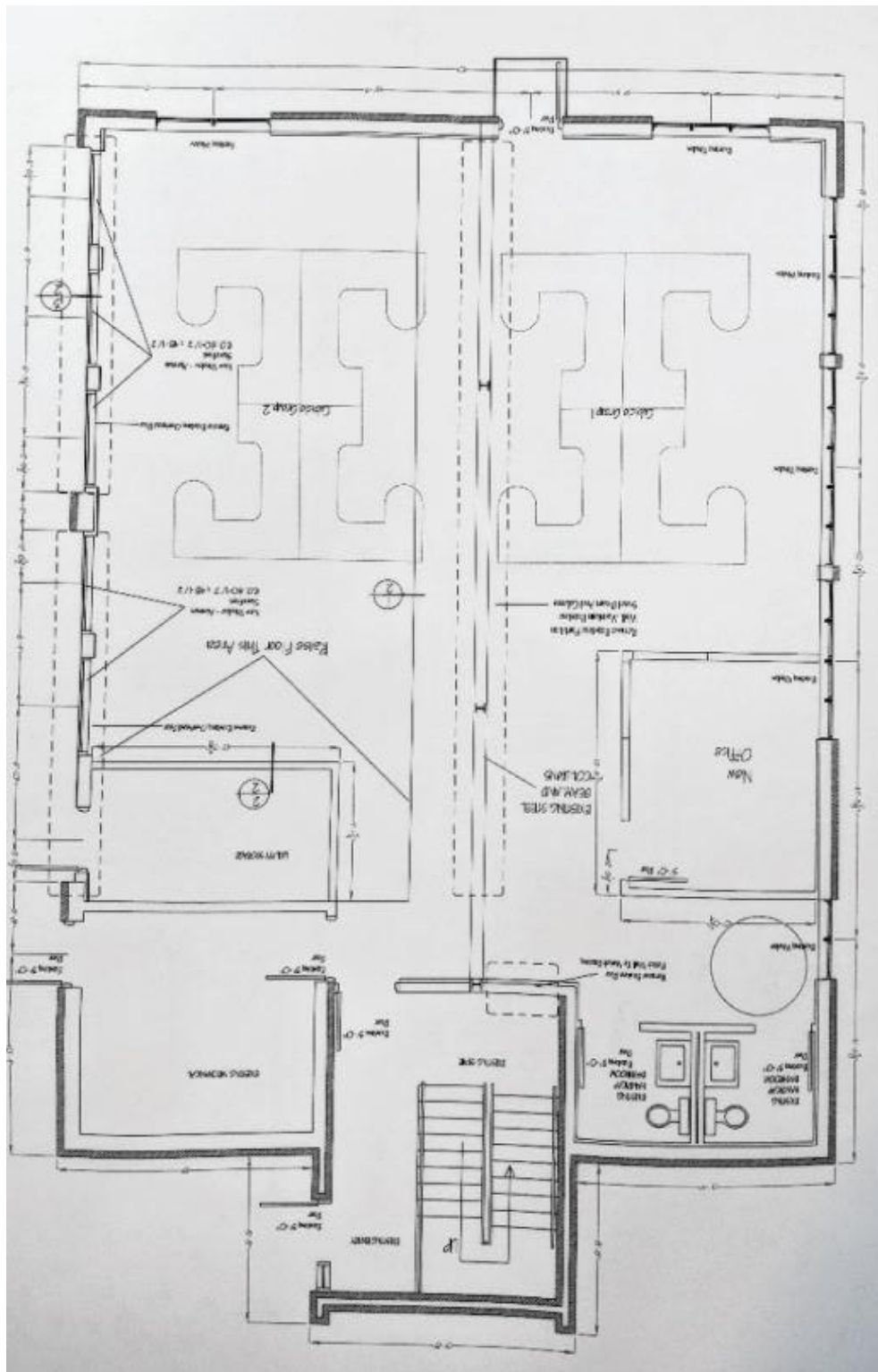




PREMIER
COMMERCIAL
PROPERTIES

FOR LEASE

1040 Sixth St S Hopkins, MN 55343

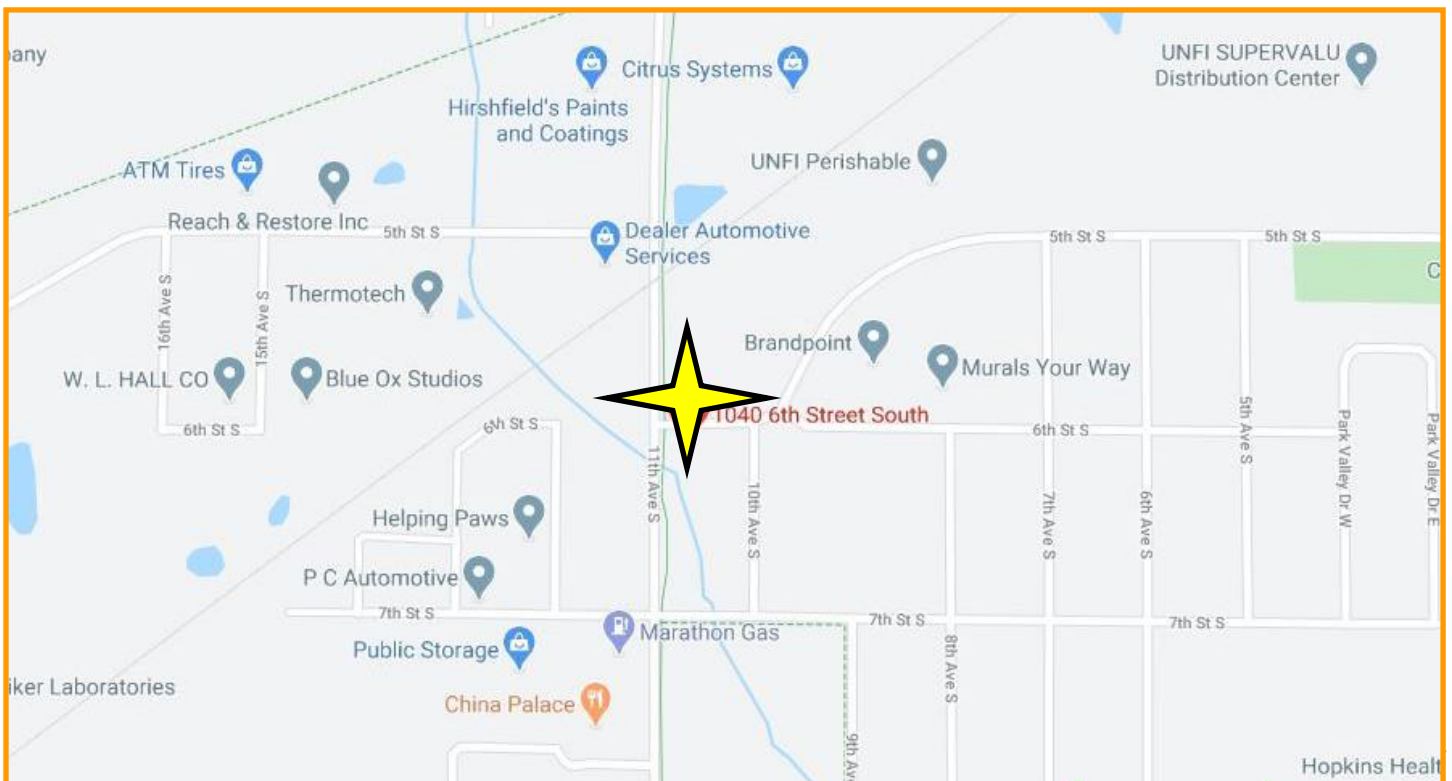
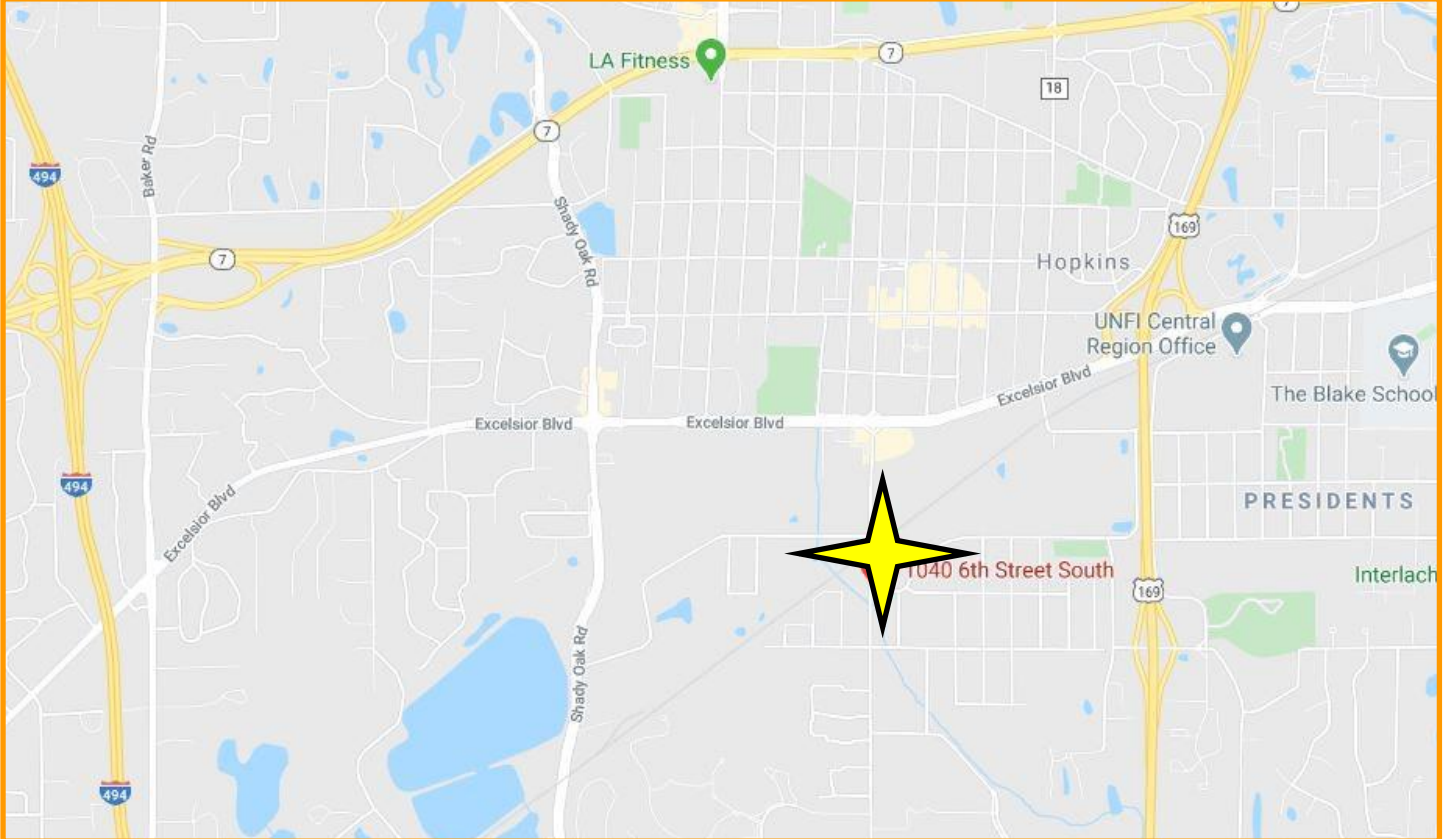




PREMIER
COMMERCIAL
PROPERTIES

FOR LEASE

1040 Sixth St S Hopkins, MN 55343

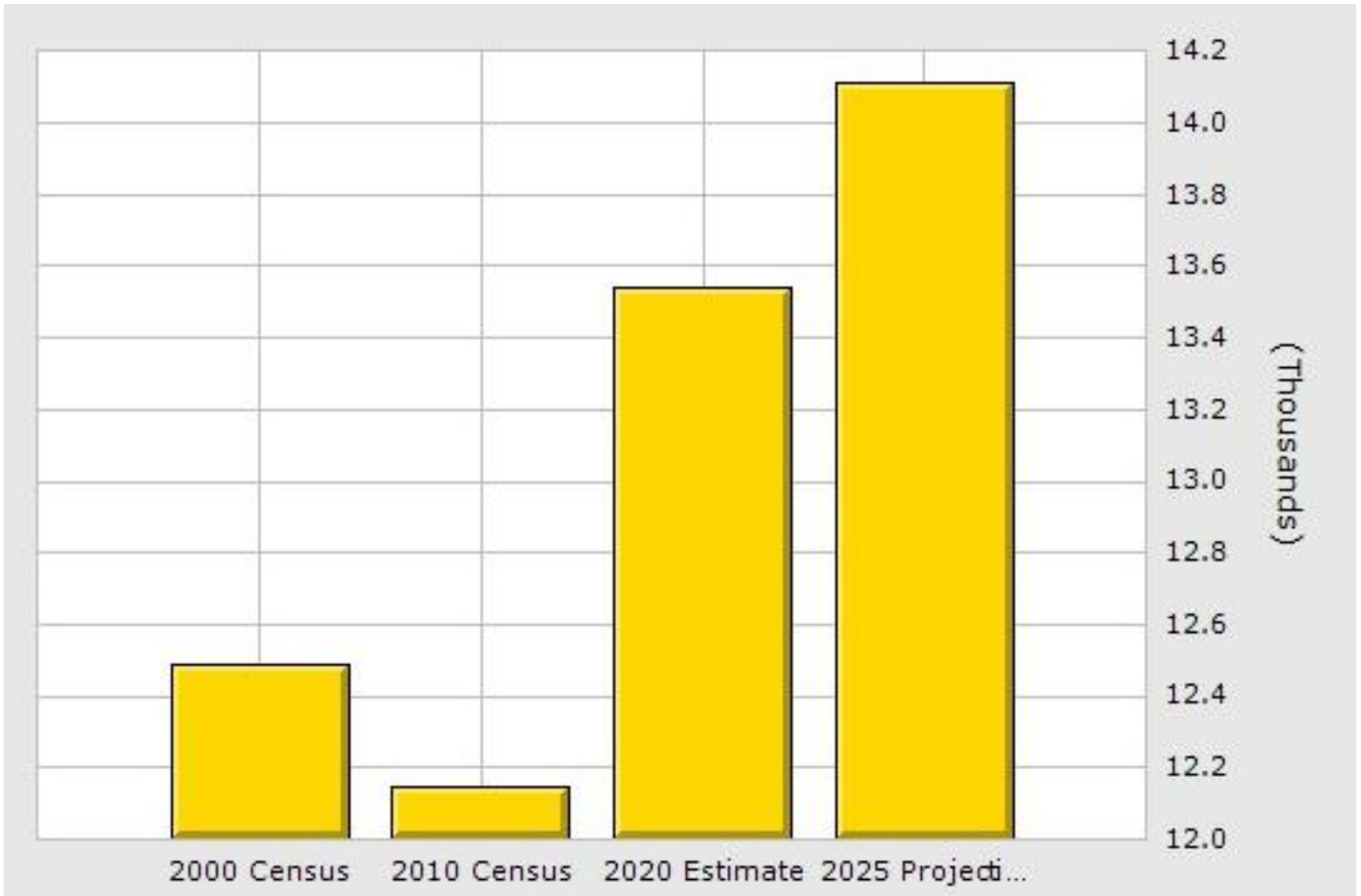




PREMIER
COMMERCIAL
PROPERTIES

FOR LEASE

1040 Sixth St S Hopkins, MN 55343



	1 Mile	3 Mile	5 Mile
Population			
2020 Total Population:	13,537	74,057	215,381
2025 Population:	14,113	76,987	223,515
Pop Growth 2020-2025:	4.26%	3.96%	3.78%
Average Age:	39.90	41.10	40.50
Households			
2020 Total Households:	6,734	33,526	95,353
HH Growth 2020-2025:	4.08%	3.80%	3.68%
Median Household Inc:	\$56,742	\$74,041	\$90,963
Avg Household Size:	1.90	2.10	2.20
2020 Avg HH Vehicles:	1.00	2.00	2.00
Housing			
Median Home Value:	\$229,525	\$336,919	\$362,954
Median Year Built:	1976	1972	1971