



Retail Space For Lease

255 County Rd 10, Blaine, MN 55434

AVAILABLE SPACE

- 2,976 square feet of space
- Currently built out as dental clinic
- Prior dentist was here for 30 years
- Close to Hwy 10 and Hwy 65
- Close to other retail
- Next to Liquor store
- Approximately 45 parking stalls
- Local ownership

PROPERTY DETAILS
Rent is Negotiable
Utilities are metered separately

FOR MORE INFORMATION, CONTACT

Marty Fisher / Mike Fisher

763-486-8247

mikefisher@premiercommercialproperties.com



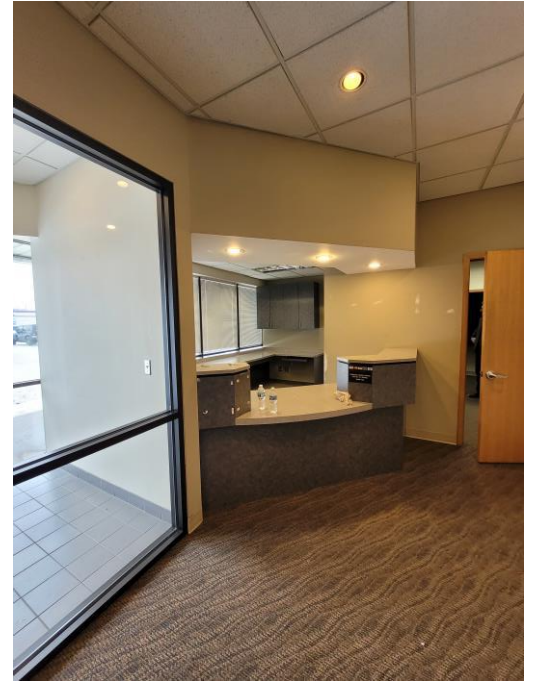
PREMIER
COMMERCIAL
PROPERTIES

FOR LEASE

CONTACT: Mike Fisher

MOBILE: 763-486-8247

EMAIL: mikefisher@premiercommercialproperties.com





PREMIER
COMMERCIAL
PROPERTIES

FOR LEASE

CONTACT: Mike Fisher

MOBILE: 763-486-8247

EMAIL: mikefisher@premiercommercialproperties.com





PREMIER
COMMERCIAL
PROPERTIES

FOR LEASE

CONTACT: Mike Fisher

MOBILE: 763-486-8247

EMAIL: mikefisher@premiercommercialproperties.com

