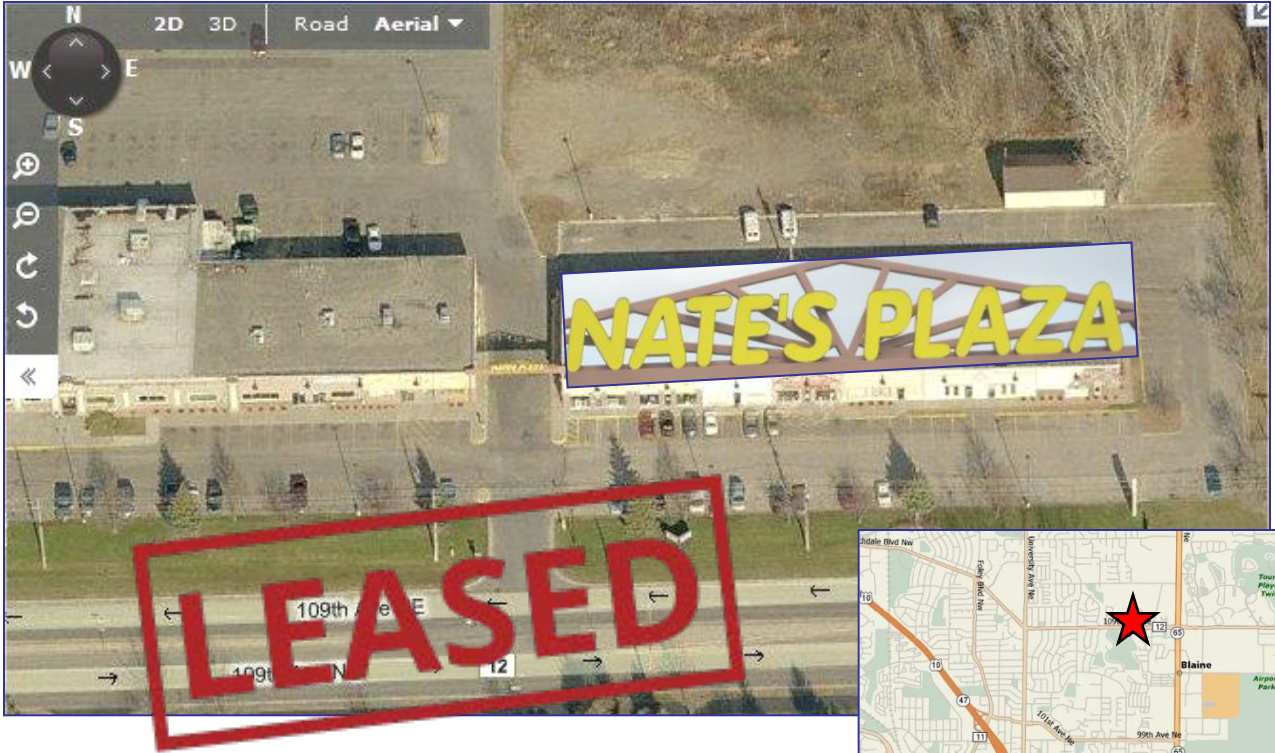


# Retail / Office Space For Lease

## Nate's Plaza 109<sup>th</sup> Avenue, Blaine, Minnesota



### PROPERTY FEATURES:

- Great tenant mix of long term tenants
- Conveniently located Between Hwy 65 & University Ave.
- Good day time and evening traffic around the center
- Office/retail space available

Suite 1017: 2,925 sq. ft. front office/showroom with warehouse - \$3,022/month

- Monument & Building Signage on 109<sup>th</sup> Ave.

For More Information Contact: MARTY FISHER / RICHARD LEE  
PREMIER COMMERCIAL PROPERTIES, INC.  
6897 139<sup>th</sup> Lane NW Ramsey, MN 55303

**763.862.2005**

[www.premiercommercialproperties.com](http://www.premiercommercialproperties.com)



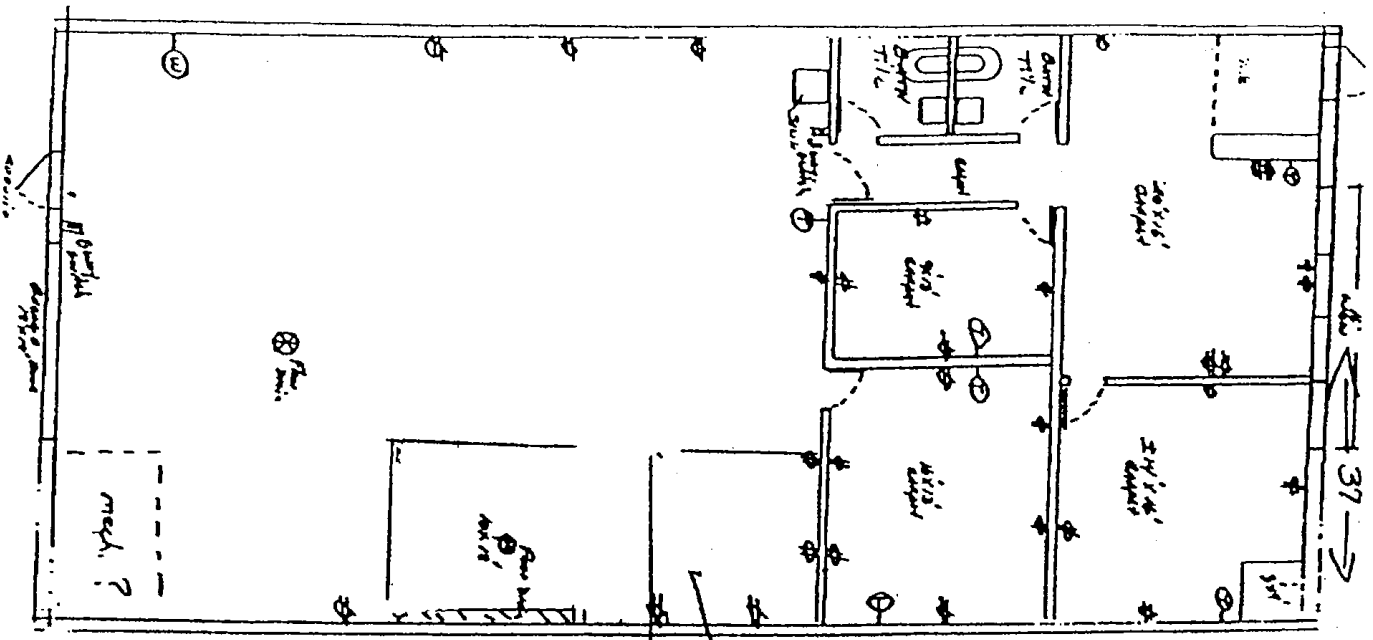
# Retail / Office Space For Lease

## Nate's Plaza 109<sup>th</sup> Avenue, Blaine, Minnesota

### Suite 1017

- 2,925 sq. ft. office/warehouse space
- 10' × 12' overhead door
- All utilities included price

Lease Rate: \$3,022.50 per month



For More Information Contact: MARTY FISHER / RICHARD LEE  
PREMIER COMMERCIAL PROPERTIES, INC.  
6897 139<sup>th</sup> Lane NW Ramsey, MN 55303

**763.862.2005**

[www.premiercommercialproperties.com](http://www.premiercommercialproperties.com)



# Retail / Office Space For Lease

## Nate's Plaza 109<sup>th</sup> Avenue, Blaine, Minnesota



### DEMOGRAPHICS 2010

|                          | <u>1 mile</u> | <u>3 miles</u> | <u>5 miles</u> |
|--------------------------|---------------|----------------|----------------|
| Total Population         | 9,186         | 68,602         | 158,847        |
| Total Households         | 3,364         | 25,418         | 59,325         |
| Total Families           | 2,510         | 18,642         | 42,644         |
| Average Household Income | \$81,085      | \$86,460       | \$85,548       |

For More Information Contact: MARTY FISHER / RICHARD LEE  
 PREMIER COMMERCIAL PROPERTIES, INC.  
 6897 139<sup>th</sup> Lane NW Ramsey, MN 55303

**763.862.2005**

[www.premiercommercialproperties.com](http://www.premiercommercialproperties.com)

