



**PREMIER**  
COMMERCIAL  
PROPERTIES

# FOR LEASE



## Single Office Suites

11270 – 86<sup>th</sup> Ave N, Maple Grove, MN

### AVAILABLE SPACE

- 1,400 square feet available
- Tenant pays prorated share of utilities
- 4 offices, conference room, break room, private bathroom, and reception.
- End unit with lots of natural lighting
- Ample parking spaces
- Close to main highways
- Close to Arbor Lakes shopping area
- Has its own thermostat

### PROPERTY DETAILS

\$21.00 per square foot  
\$2,450 per month

### FOR MORE INFORMATION, CONTACT

**Mike Fisher**

763-486-8247

[mikefisher@premiercommercialproperties.com](mailto:mikefisher@premiercommercialproperties.com)



**PREMIER**  
COMMERCIAL  
PROPERTIES

# FOR LEASE

**CONTACT:** Mike Fisher

**MOBILE:** 763-486-8247

**EMAIL:** [mikefisher@premiercommercialproperties.com](mailto:mikefisher@premiercommercialproperties.com)

## Back office over looks pond and has electric fireplace





**PREMIER**  
COMMERCIAL  
PROPERTIES

**FOR LEASE**

**CONTACT:** Mike Fisher

**MOBILE:** 763-486-8247

**EMAIL:** [mikefisher@premiercommercialproperties.com](mailto:mikefisher@premiercommercialproperties.com)

Back office over looks pond and has electric fireplace





**PREMIER**  
COMMERCIAL  
PROPERTIES

# FOR LEASE

**CONTACT:** Mike Fisher

**MOBILE:** 763-486-8247

**EMAIL:** [mikefisher@premiercommercialproperties.com](mailto:mikefisher@premiercommercialproperties.com)





**PREMIER**  
COMMERCIAL  
PROPERTIES

# FOR LEASE

**CONTACT:** Mike Fisher

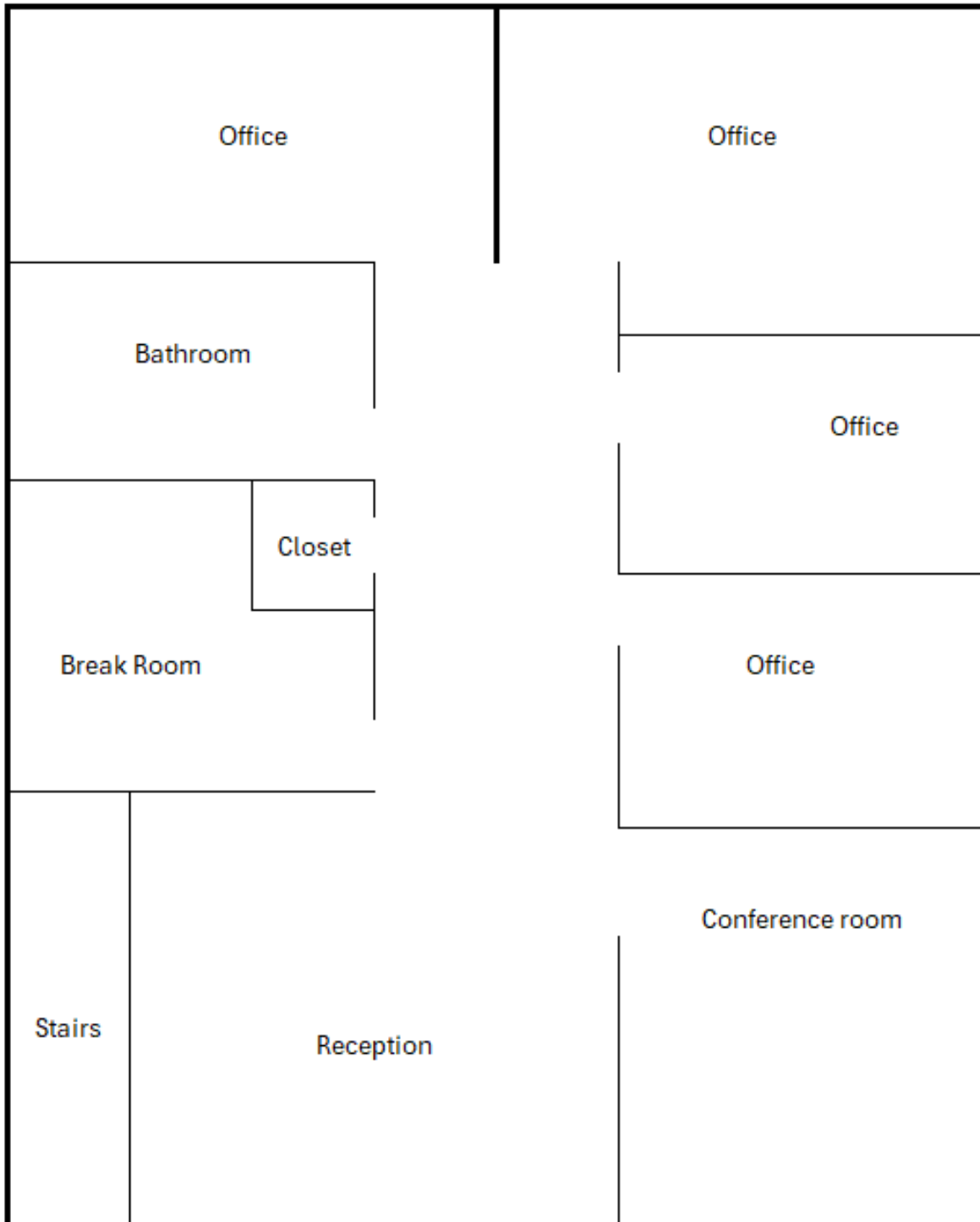
**MOBILE:** 763-486-8247

**EMAIL:** [mikefisher@premiercommercialproperties.com](mailto:mikefisher@premiercommercialproperties.com)





## Floor Plan





**PREMIER**  
COMMERCIAL  
PROPERTIES

# FOR LEASE

**CONTACT:** Mike Fisher

**MOBILE:** 763-486-8247

**EMAIL:** [mikefisher@premiercommercialproperties.com](mailto:mikefisher@premiercommercialproperties.com)

