



Industrial Available

450 Apollo Drive
Lino Lakes, MN 55014

Property Details:

- Great location and image
- Visibility to I-35W
- 17,650 Total SF
- 2.30 Acres (ability to expand)
- Year Built – 1996 tilt up construction
- 18' Clear Height
- Fully Sprinklered
- LI - Light Industrial Zoning
- 38 Parking Stalls



Sale Price: \$2,200,000
Property Tax: \$43,220.74(2024)

FOR MORE INFORMATION

Richard Lee

612-718-9919

richlee@premiercommercialproperties.com

Disclaimer: All Measurements, dimensions and sizes are approximate



CONTACT: Richard Lee

MOBILE: 612-718-9919

EMAIL: richlee@premiercommercialproperties.com

Property Details:

- 17,650 Gross Building Area
- 13,000 SF Warehouse
- 4,650 SF Office
- 2,350 Mezzanine storage

Office Space – 4,650 SF:

- Open reception area
- Mix of large private offices
- Large conference room

Warehouse Space – 13,000 SF:

- Climate controlled
- (2) Drive in Doors (12' tall x 12' wide)
- Double Door – Man door
- Heavy power – 3 phase / 1,200 amp
- Inspection room

- 2,350 SF Mezzanine storage (Not included in the GBA)





PREMIER
COMMERCIAL
PROPERTIES

FOR SALE

CONTACT: Richard Lee

MOBILE: 612-718-9919

EMAIL: richlee@premiercommercialproperties.com



299 Coon Rapids Blvd NW, Suite 200 | **Coon Rapids, MN 55433** | premiercommercialproperties.com | **763-862-2005**

Disclaimer: All Measurements, dimensions and sizes are approximate



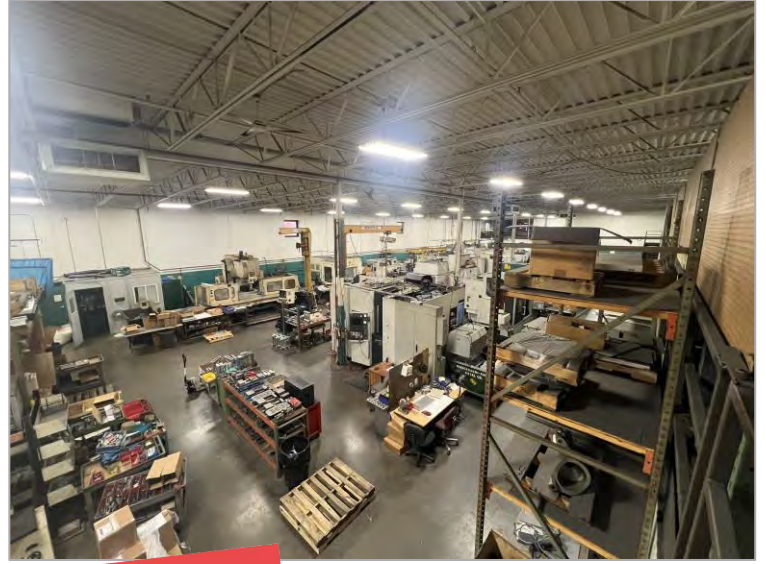
PREMIER
COMMERCIAL
PROPERTIES

FOR SALE

CONTACT: Richard Lee

MOBILE: 612-718-9919

EMAIL: richlee@premiercommercialproperties.com



SOLD



299 Coon Rapids Blvd NW, Suite 200 | **Coon Rapids, MN 55433** | premiercommercialproperties.com | **763-862-2005**

Disclaimer: All Measurements, dimensions and sizes are approximate



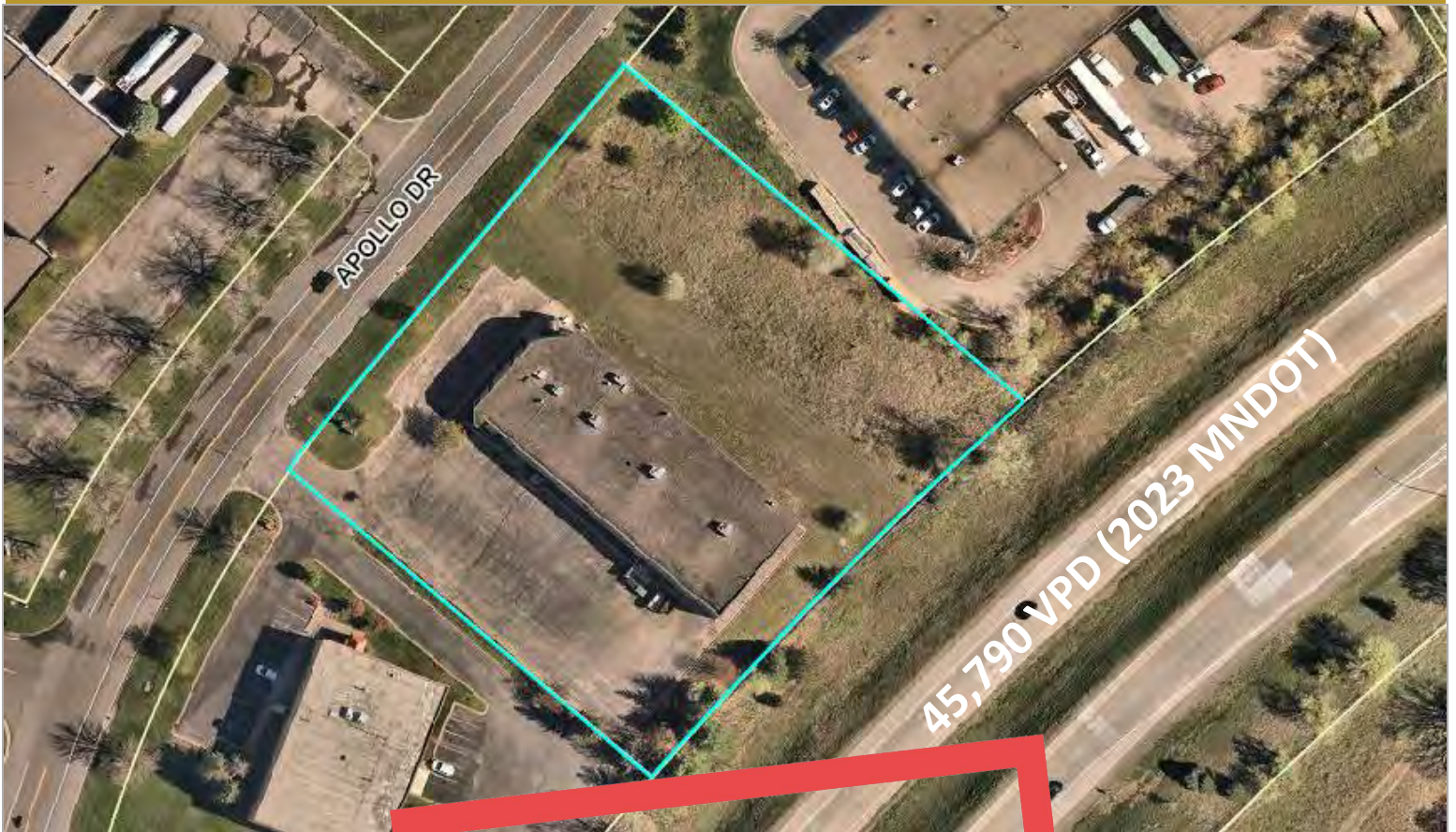
PREMIER
COMMERCIAL
PROPERTIES

FOR SALE

CONTACT: Richard Lee

MOBILE: 612-718-9919

EMAIL: richlee@premiercommercialproperties.com



299 Coon Rapids Blvd NW, Suite 200 | **Coon Rapids, MN 55433** | premiercommercialproperties.com | **763-862-2005**

Disclaimer: All Measurements, dimensions and sizes are approximate