



PREMIER
COMMERCIAL
PROPERTIES

FOR SALE



For Sale

3070 Coon Rapids Blvd Coon Rapids, MN

AVAILABLE SPACE

- Stand alone building totaling 2,513 square feet
- Built in 1976
- Expansion Capability
 - Two Anoka County PID's 16-31-24-32-0011 and PID# 16-31-24-32-0012
 - Two parcels total approximately 1.34 Acres
- Current owner has outgrown space
- Access to Coon Rapids Blvd (16,980 vehicles/day)
- Great office / retail corridor
- Current use as financial exchange
- Local retailers include Anoka / Ramsey Community College, McDonald's



PROPERTY DETAILS

Sale Price \$600,000

Property Taxes \$12,202.20 (2025)

FOR MORE INFORMATION, CONTACT

Marty Fisher

763-862-2005

mfisher@premiercommercialproperties.com

mikefisher@premiercommercialproperties.com



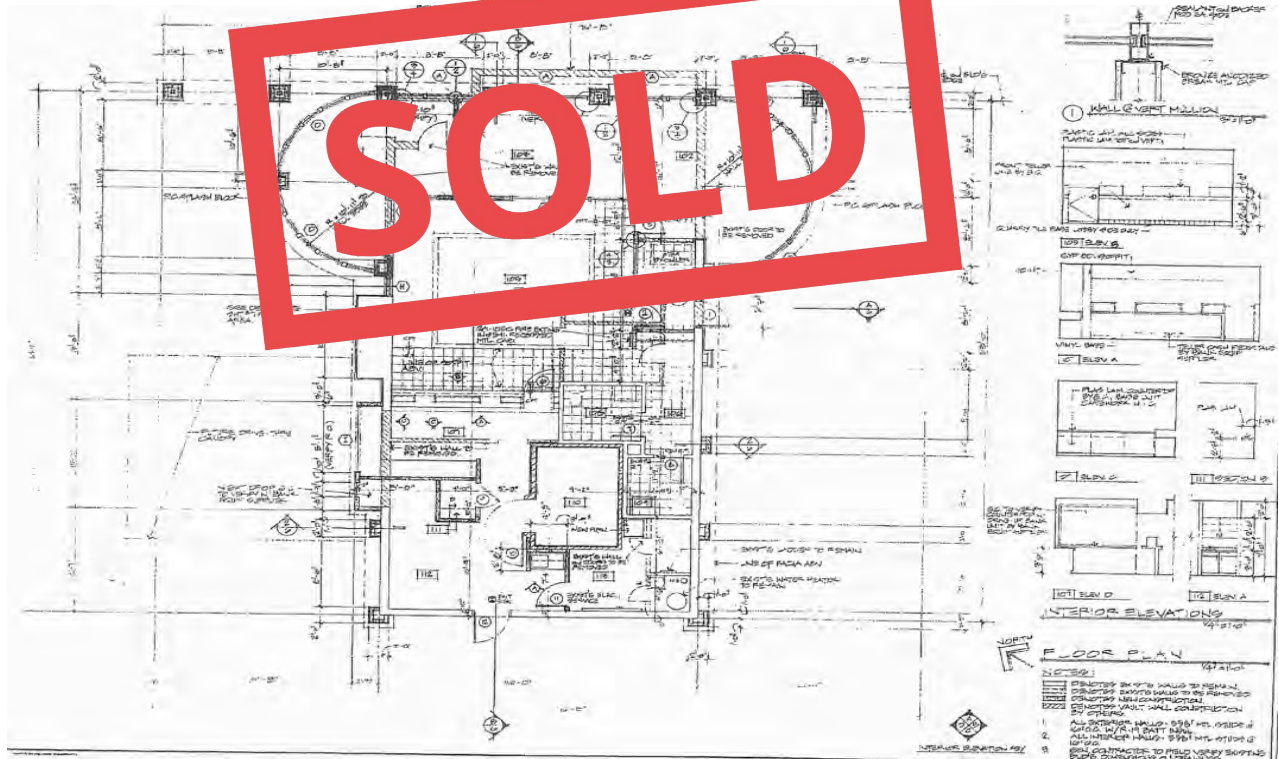
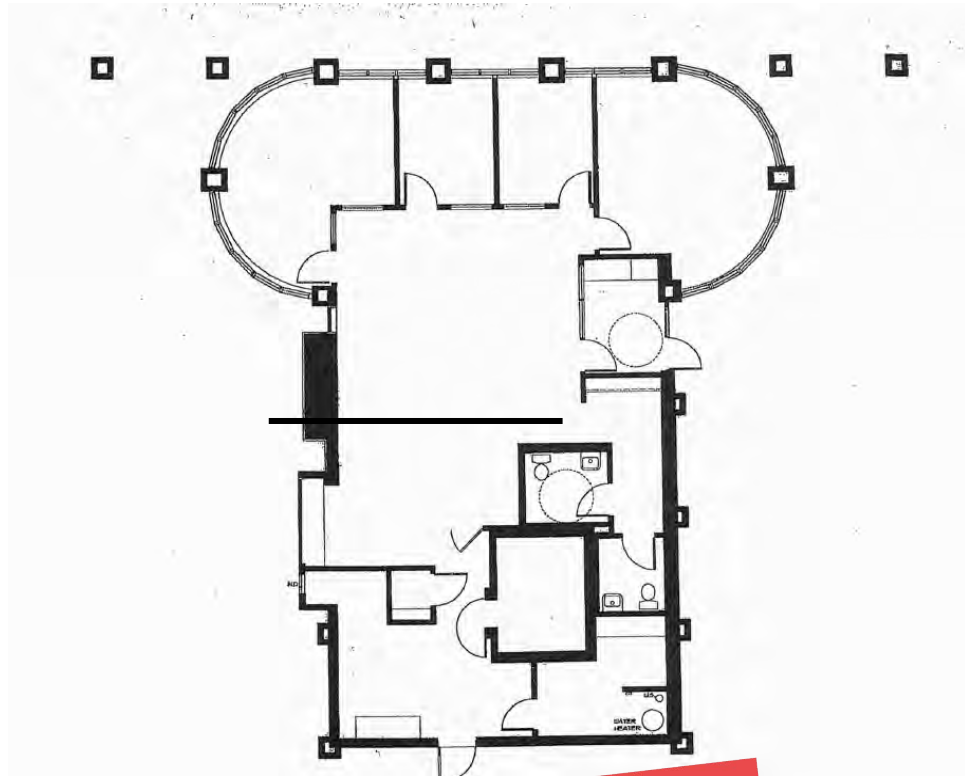
PREMIER
COMMERCIAL
PROPERTIES

FOR SALE

CONTACT: Marty Fisher

MOBILE: 612-708-2873

EMAIL: mfisher@premiercommercialproperties.com



Floor plans are approximate



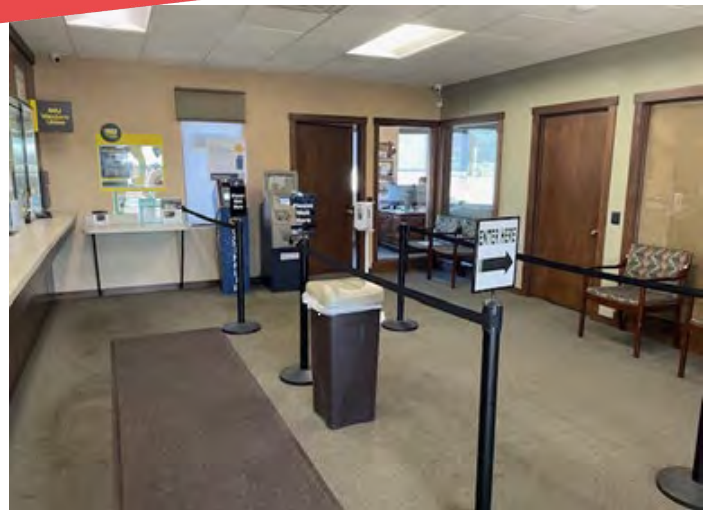
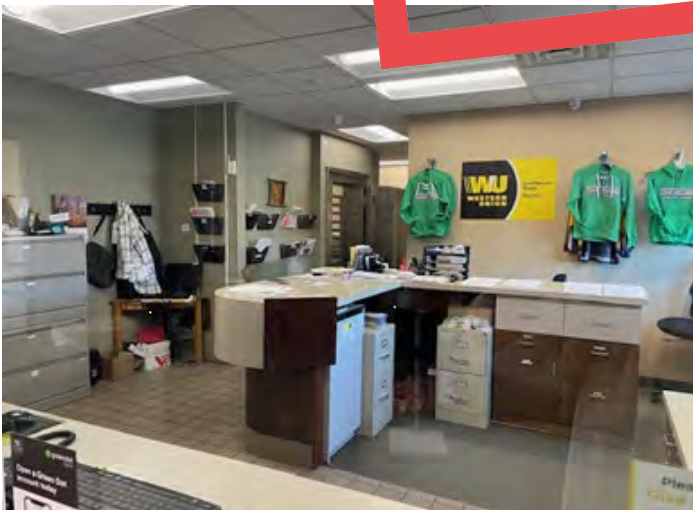
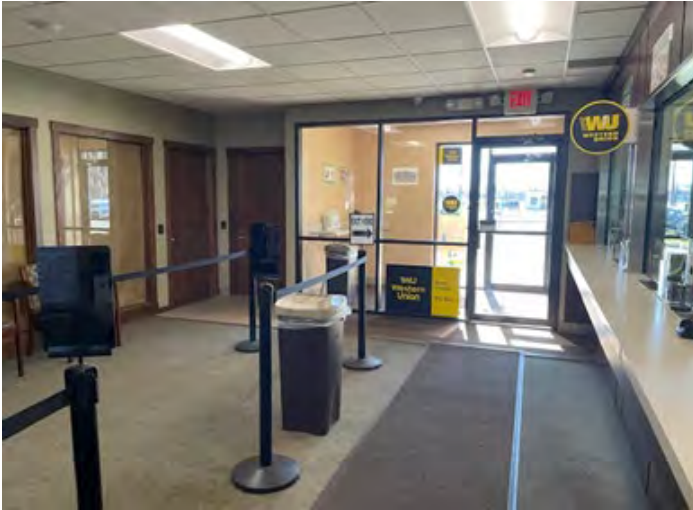
PREMIER
COMMERCIAL
PROPERTIES

FOR SALE

CONTACT: Marty Fisher

MOBILE: 612-708-2873

EMAIL: mfisher@premiercommercialproperties.com



SOLD



PREMIER
COMMERCIAL
PROPERTIES

FOR SALE

CONTACT: Marty Fisher

MOBILE: 612-708-2873

EMAIL: mfisher@premiercommercialproperties.com



**Proposed expansion plan
adding 1,500 SF building**



PREMIER
COMMERCIAL
PROPERTIES

FOR SALE

CONTACT: Marty Fisher

MOBILE: 612-708-2873

EMAIL: mfisher@premiercommercialproperties.com



Demographics 2023	1 Mile	5 Miles	5 Miles
Average Income	\$88,080	\$99,738	\$103,943
Households	4,115	31,573	71,941
Population	10,772	83,171	194,797



PREMIER
COMMERCIAL
PROPERTIES

FOR SALE

CONTACT: Marty Fisher

MOBILE: 612-708-2873

EMAIL: mfisher@premiercommercialproperties.com

Anoka County Parcel Viewer



Parcel Information: Approx. Acres: 0.81
16-31-24-32-0012 Commissioner: SCOTT SCHULTE
3070 COON RAPIDS BLVD NW
COON RAPIDS
MN 55433
Plat: AUD SUB NO 74

Owner Information:
BENNETT PROPERTY LLC
3070 COON RAPIDS BLVD NW
COON RAPIDS
MN
55433