



PREMIER
COMMERCIAL
PROPERTIES

FOR LEASE

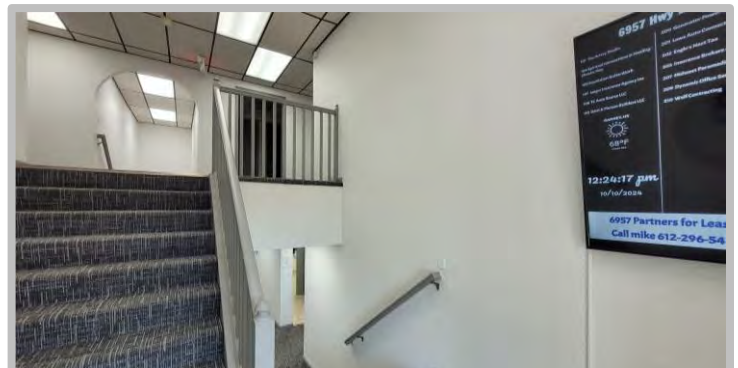


Office For Lease

6957 US-10
Ramsey, MN 55304

AVAILABLE SPACE

- Office suites available from 188 SF to 475 rentable SF
- Ample parking
- Rent includes utilities
- Signage to Highway 10
- Onsite ownership
- All spaces have new carpet and paint
- 24/7 access
- Recent building update
- MTM leases allowed, but will be \$50 more per month



PROPERTY DETAILS

\$550 to \$1,100 per month
Utilities Included

FOR MORE INFORMATION, CONTACT

Mike Fisher

763-486-8247

mikefisher@premiercommercialproperties.com



PREMIER
COMMERCIAL
PROPERTIES

FOR LEASE

CONTACT: Mike Fisher

MOBILE: 763-486-8247

EMAIL: mikefisher@premiercommercialproperties.com

Available Units

Unit 103 – 180 square feet - \$550.00

Unit 107 – 464 square feet - \$1,100.00

Unit 110 – 378 square feet - \$1,100.00

Unit 210 – 412 square feet - \$1,100.00

Unit 211 – 307 square feet - \$750.00



PREMIER
COMMERCIAL
PROPERTIES

FOR LEASE

CONTACT: Mike Fisher

MOBILE: 763-486-8247

EMAIL: mikefisher@premiercommercialproperties.com



Unit 103 - \$550 per month
Single office



PREMIER
COMMERCIAL
PROPERTIES

FOR LEASE

CONTACT: Mike Fisher

MOBILE: 763-486-8247

EMAIL: mikefisher@premiercommercialproperties.com



Unit 107 - \$1,100.00 per month Double office



PREMIER
COMMERCIAL
PROPERTIES

FOR LEASE

CONTACT: Mike Fisher

MOBILE: 763-486-8247

EMAIL: mikefisher@premiercommercialproperties.com



**Unit 110 - \$1,100.00 per month Double office
can be shrunk into two smaller offices.**



PREMIER
COMMERCIAL
PROPERTIES

FOR LEASE

CONTACT: Mike Fisher

MOBILE: 763-486-8247

EMAIL: mikefisher@premiercommercialproperties.com



Unit 210 - \$1,100.00 per month large office with reception and conference room. Approx. 15 x 29



PREMIER
COMMERCIAL
PROPERTIES

FOR LEASE

CONTACT: Mike Fisher

MOBILE: 763-486-8247

EMAIL: mikefisher@premiercommercialproperties.com



Unit 211 - \$750.00 per month large office with storage space

Approx. 15 x 16, personal property can be removed



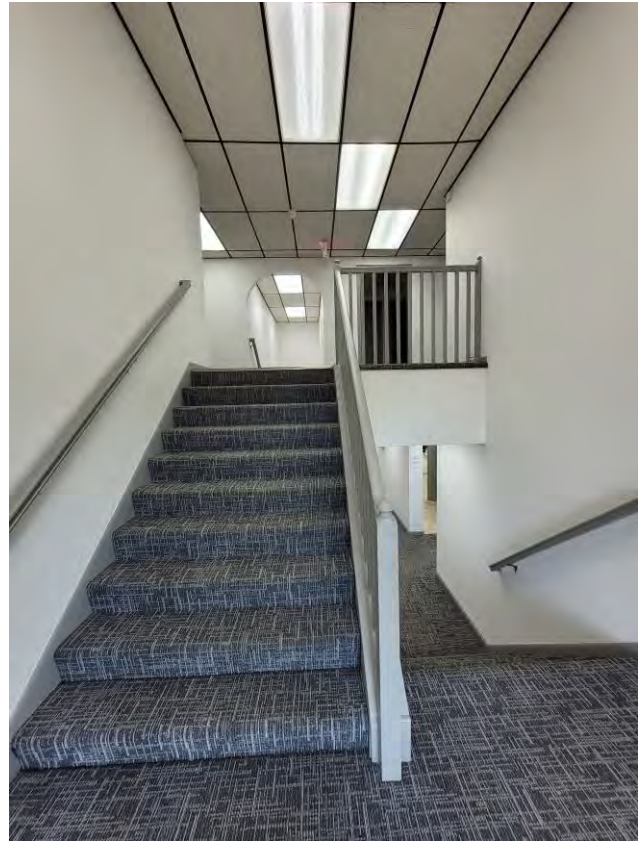
PREMIER
COMMERCIAL
PROPERTIES

FOR LEASE

CONTACT: Mike Fisher

MOBILE: 763-486-8247

EMAIL: mikefisher@premiercommercialproperties.com

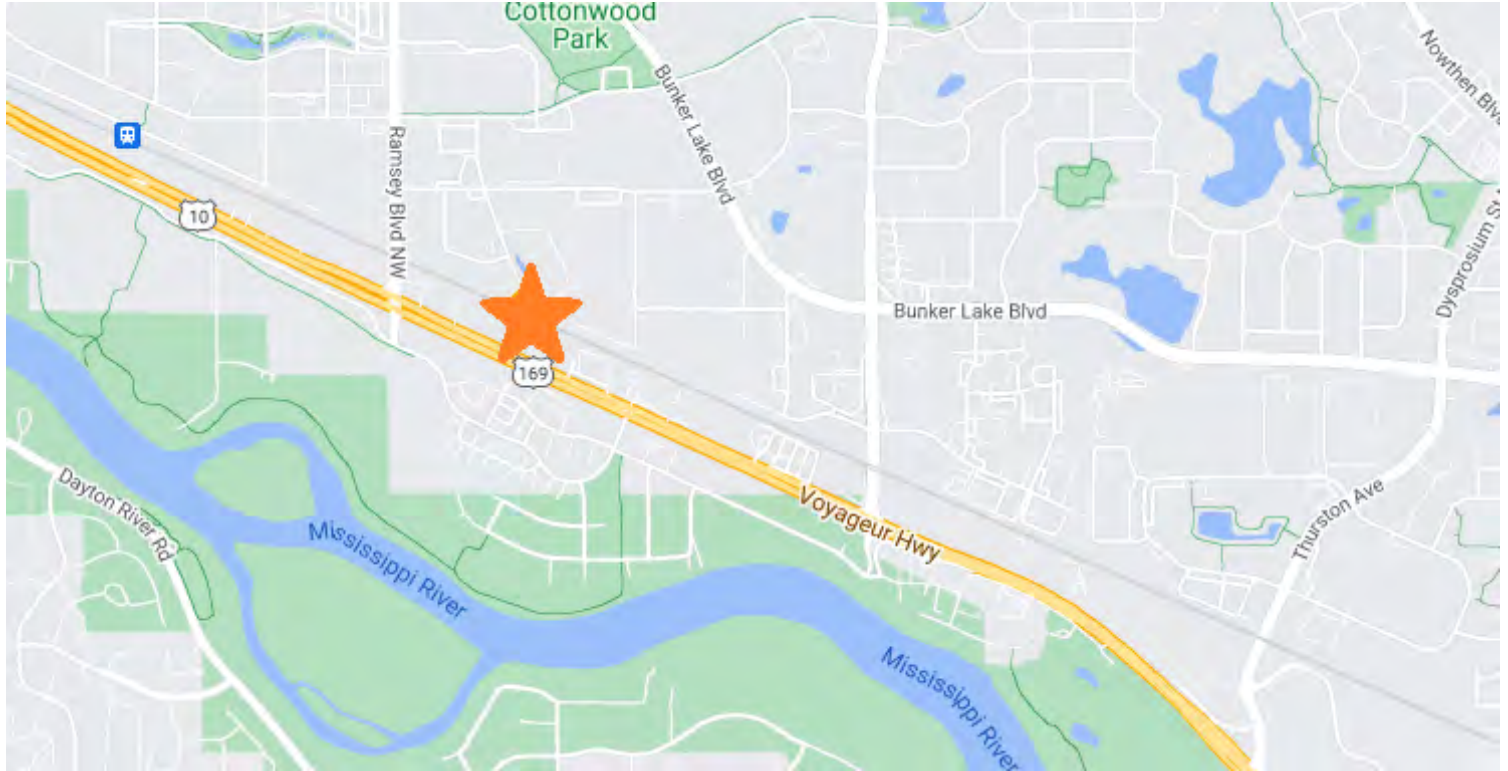




CONTACT: Mike Fisher

MOBILE: 763-486-8247

EMAIL: mikefisher@premiercommercialproperties.com



	2 mile	5 mile	10 mile
2024 Population	15,433	81,472	353,267
Annual Growth 2024-2029	0.90%	0.70%	0.50%
Median Age	36.6	39.8	39.7
Avg Household Income	\$ 108,429	\$ 114,090	\$ 119,556
Median Home Value	\$ 305,307	\$ 322,475	\$ 318,798
Median Year Built	1998	1989	1989
Bachelor's Degree or Higher	29%	31%	34%